



dot-art Activity Report, April – April 26

- Exhibitions

In Full Bloom

17th October – 29th November

An exhibition by Frank Leung, Hilary Dron and Madeleine Pires.

In Full Bloom brings together works by three dot-art members to explore the beauty and emotional resonance of flowers. Observations of changing seasons are paired with abundant wild meadows, while bright, lively florals and foliage speak to us through poetry.



dot-art.com



info@dot-art.com



0345 0176660



[dot-art](https://www.facebook.com/dot-art)



[@dotartliverpool](https://www.instagram.com/dotartliverpool)



[dot-art](https://www.linkedin.com/company/dot-art)



The Liverpool Collection
5th December – 7th February

An exhibition of affordable art by dot-art Artist Members.

To end 2025, we are bringing together both well-known and brand-new views of Liverpool. Expect to see their skill and talent of 31 dot-art Artist Members applied to the broad spectrum of inspiration available in the city.

**THE
LIVERPOOL
COLLECTION**

An exhibition of affordable original art
by dot-art Artist Members

5th December to 7th February

dot-art Gallery, 14 Queen Avenue,
Castle Street, Liverpool
L2 4TX

 dotartliverpool

 dotart_gallery_liverpool

 dot-art

FOR MORE INFORMATION PLEASE VISIT [DOT-ART.CO.UK](https://www.dot-art.co.uk)



[dot-art.com](https://www.dot-art.com)



info@dot-art.com



0345 0176660



dot-art



@dotartliverpool



dot-art



20x20

13th February – 2nd April

An exhibition featuring over 40 dot-art Artist Members.

Since 2006, dot-art has been at the heart of the Liverpool City Region's cultural landscape, championing local artists and making art accessible to all. To celebrate our 20th birthday in 2026, we invited our artist members to create or submit artwork that measures 20x20cm.

A poster for a 20x20 exhibition. The background is a colorful abstract painting with various shades of blue, purple, red, and green. In the top right corner, there is a logo for 'dot art 20 YEARS' featuring a grid of dots. The main text '20x20' is prominently displayed in the center, with the 'x' being a white shape filled with colorful, swirling lines. Below the title, the text reads: 'An exhibition of 20x20cm artwork by dot-art Artist Members to celebrate our 20th birthday', '13th February - 2nd April', 'dot-art Gallery, 14 Queen Avenue, Castle Street, Liverpool L2 4TX'. At the bottom, there are three social media icons: Instagram with the handle 'dotartliverpool', TikTok with 'dotart_gallery_liverpool', and Facebook with 'dot-art'. Below these icons, it says 'FOR MORE INFORMATION PLEASE VISIT DOT-ART.CO.UK'.



- **INNSiDE Exhibitions**

Rooted in Joy

October 2025 – January 2026

An exhibition by Jessica Slack

dot-art and Jessica Slack invite you to join in her mission: To spread joy and positivity across the globe through her art. Her aspiration is to transform everyday lives, inviting people to immerse themselves in the mindful benefits of getting lost in abstract paintings.

INNSiDE by Meliá
Liverpool

dot art

**ROOTED
IN JOY**

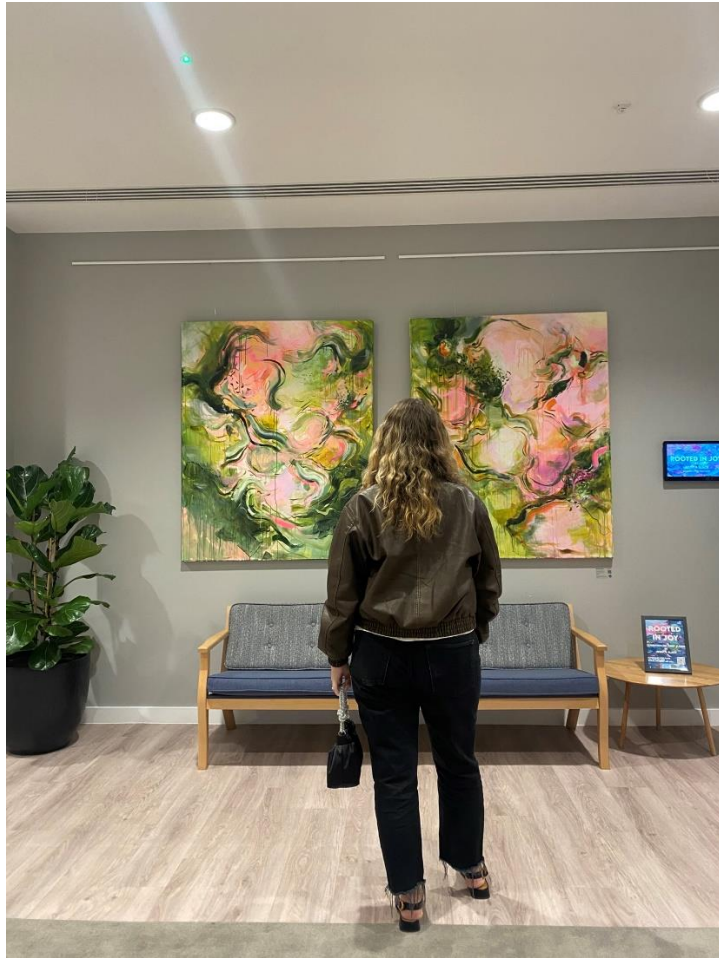
BY
JESSICA SLACK

**FRIDAY 26TH SEPTEMBER 2025 -
LATE JANUARY 2026**

INNSIDE, OLD HALL STREET, LIVERPOOL, L2 9LQ

ALL WORKS FOR SALE

f dot-art i dotartliverpool t dot-art Gallery



TWENTY

February - June 2026

An exhibition by twenty dot-art Artist Members at INNSiDE hotel by Melia.

Since 2006, dot-art has been at the heart of the Liverpool City Region's cultural landscape, championing local artists and making art accessible to all. To celebrate our 20th birthday in 2026, we have brought together large-scale work from twenty of our artist members.

INNSiDE by Meliã
Liverpool

dot art
20 YEARS

TWENTY

**AN EXHIBITION BY TWENTY OF
DOT-ART'S ARTIST MEMBERS,
CELEBRATING OUR 20TH
BIRTHDAY**

**FRIDAY 5TH FEBRUARY -
LATE MAY 2026**

**FIRST FLOOR, INNSIDE BY MELIA, OLD
HALL STREET, LIVERPOOL, L3 9LQ**

ALL WORKS FOR SALE

f dot-art **Instagram icon** dotartliverpool **TikTok icon** dot-art Gallery







- **Art in the Ev**

As part of our work with the Everyman, we curate a rolling programme of local artists work in an exhibition space on the first floor at the Everyman. Art in the Ev is open to individuals and groups, exhibitions will last between 2 to 6 weeks, with artwork on display available to buy through the street cafe. The hire fee is £150 per 2 week block.

The following exhibitions from dot-art Members have taken place over the past 6 months:

- **Unseen Beauty – Joe Venning and Anna Gaston** (see below for details), 26th Feb – 14th March
- **Red Mythologies, Andrew Storey**, 31st March – 14th April

The space is fully booked until the end of the summer but we hope to release some slots for the early Autumn of 2026 soon.

For expressions of interest in hiring the Art in the Ev exhibition space, please visit <https://form.jotform.com/dotart/art-in-the-ev>



- **Liverpool Art Fair**



Liverpool's celebrated art fair returns to the Royal Liver Building this summer, inviting artists to submit work for its most ambitious edition yet.

Liverpool Art Fair will open to the public on 12th June and run until 26th July 2026, operating 7 days a week from 12-5pm at the iconic Royal Liver Building. Now in its 12th year, the event continues its mission to make art accessible to everyone, with pieces starting at just £25 and a price cap of £2,500, including a substantial section dedicated to works under £250.

Last year's fair was the most successful to date, with 191 artists exhibiting, over 50% selling their work, and sales increasing 61% from the previous year. Almost 9,000 people visited the 2025 event, an 83% increase on 2024, bringing the total number of visitors since 2012 to nearly 70,000, with almost 2,700 artists showcased over the fair's history.

Artist submissions opened on Monday 16th March and close on **26th April**, with successful artists notified in early May.

As always, dot-art Members can enter for **FREE** (usually £6 per submission), by filling in this form: <https://form.jotform.com/dotart/LAF-26-Members>

- **dot-art Schools**

The 14th annual dot-art Schools programme launched in September, and we have over 90 schools taking part in this year's competition, which will culminate in a month long exhibition of winning works at the Walker Art Gallery this June and July.

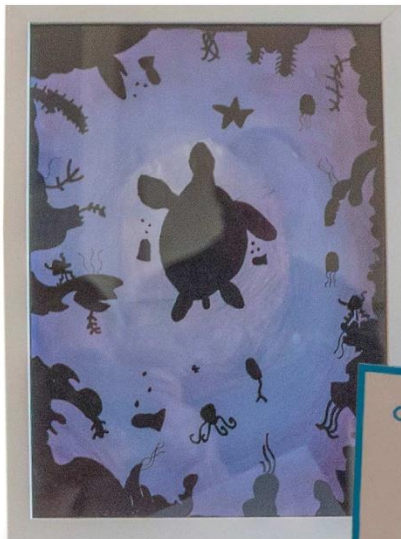
To have your say on which works are included, place your vote online by 16th April: <https://schools.dot-art.com/browse-schools/>



VOTE FOR YOUR FAVOURITE
SHORTLISTED ARTWORK ONLINE

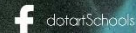
VOTING IS OPEN FROM
THUR 19TH MARCH -
THUR 16TH APRIL 2026

[SCHOOLS.DOT-ART.COM/BROWSE-SCHOOLS](https://schools.dot-art.com/browse-schools/)



The artwork from each school with the most votes wins a place in the 14th dot-art Schools exhibition at the Walker Art Gallery.

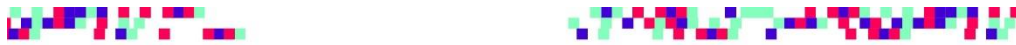
Springboard
Advertising & Media



- **Art Bytes**

Our national schools programme, Art Bytes also has voting open right now, with the winning artwork from each of the almost 150 participating schools from across England going into our Virtual Gallery for the next 12 months AND moving forward to be considered for Regional and National awards.

Vote here by 19th April: <https://artbytes.co.uk/browse-schools/>



VOTE NOW



FOR YOUR FAVOURITE ARTWORK ONLINE
FROM FRI 20 MARCH - SUN 19 APRIL 2026

[ARTBYTES.CO.UK/BROWSE-SCHOOLS](https://artbytes.co.uk/browse-schools/)



The artwork from each school with the most votes wins a place in the Art Bytes Virtual Gallery. The school with the most votes cast wins the Community Engagement Award.

 ArtBytesUK  artbytes2895

 artbytes_  artbytes.co.uk



- **Unseen Beauty**

Unseen Beauty was a collaborative project between dot-art, artists Joe Venning and Anna Gaston and led by Psychology academics from Liverpool Hope University, LJMU and Edge Hill University. It explored beauty beyond vision, inviting you to experience it through sound, touch, memory, emotion and imagination. A reminder that while beauty is universal, the way we feel it is deeply personal.

The year long project culminated in an exhibition at the Art in The Ev space at the Everyman Theatre on Hope Street. Paintings by dot-art artist Joe Venning are inspired by ongoing conversations between the sighted artist and visually impaired adults, exploring questions such as: 'How do I see myself?' and 'How do I experience beauty in the world?' The works emerged from ongoing creative dialogue with the artist and participants shaping each piece together.

Anna Gaston's tactile sculptures, or Personality Pods, were created by visually impaired children from the Royal School for the Blind, Liverpool during workshops led by the sighted dot-art artist. Each sculpture reflects the child's personality and the beauty they experienced through exploring different tactile materials, inviting visitors to engage through touch.







- **Festival of Data**

dot-art was delighted to be part of the Festival of Data 2026, an interactive three-day event taking place at ACC Liverpool on the 5th-7th February, marking the culmination of the Liverpool City Region Civic Data Cooperative's five-year programme exploring data collection, visualisation and innovation.

dot-art artists Stu Harrison and Brigitte Watkinson created interactive artworks that reimagine data in creative ways: Stu visualised healthy food accessibility using layered acetate figures, while Brigitte transformed household data into tactile textile artworks

Alongside them, six other artists and more than 250 schoolchildren worked with datasets about the Liverpool City Region, turning open data into visual stories. By prioritising open data (information freely available for anyone to download and explore) the project encouraged communities to engage with the numbers that shape everyday life, demonstrating how creativity can make complex data more accessible, meaningful and inspiring.





- **Tune Hotel**

Our neighbours Tune Hotel were looking for some new artwork after a refurbishment and approached us to help. They purchased prints by John Petch, Jane Adams, Riichard Farrell and Martin Jones which are now displayed in the public areas.





- **TreeStory Wigan**

We officially launched the new TreeStory Wigan website at an event at Open Eye Hub on 18th February. Please visit <https://wigan.treestory.me/> and add your own images and words about your favourite tree in the Wigan and Leigh area.

You can take inspiration from one of our very own artist members, Madeleine Pires, who was one of our first "TreeStory Tellers" and had her story added as one of the first on the site!

Do help us spread the word; we have printed flyers and posters if you are able to take any.

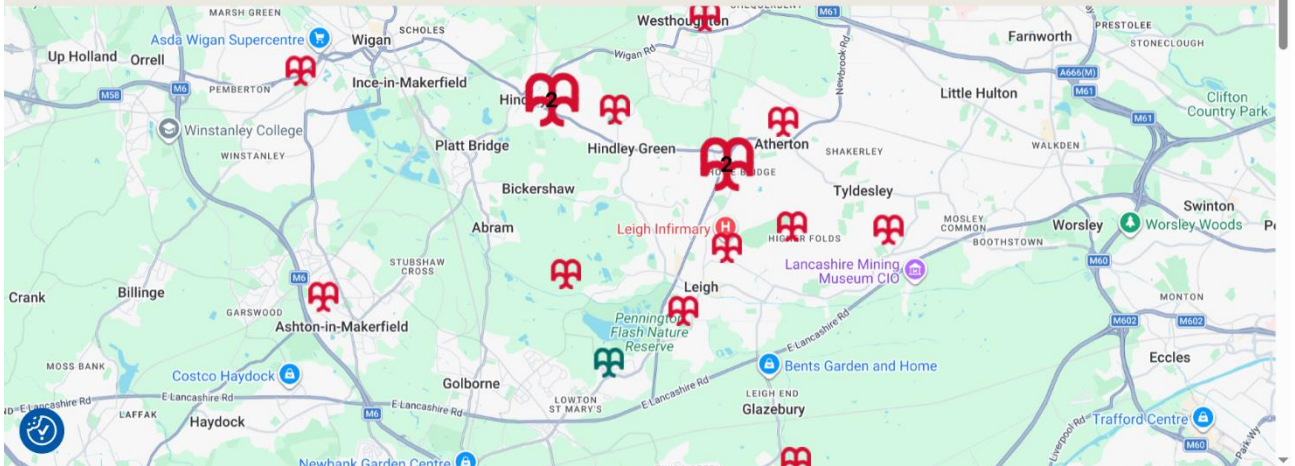


The flyer features a dark green header with the TreeStory logo and the text "TreeStory.me". Below this is a photograph of a tree branch with green leaves. To the right of the photo, the text reads "Help us create a story of Wigan through it's trees". Below this text is a QR code and the text "Share your photos and story online at TreeStory.me". The bottom half of the flyer shows a map of Wigan and Leigh with various icons and labels for different areas: Standish, Aspull, Wigan, Pembrton, Abram, Tyldesley, and Leigh. The TreeStory logo and "Wigan" are also present on the map.



TreeStory Wigan

The Story of Wigan through its trees



Sweet Chestnut

by Madeleine Pires



Very near where I live, just outside St Mary’s Church and Hall, is a large horse chestnut tree. I walk and drive past it every day on trips to school, work and the local printer that I use for my work. In March, it is always the first tree to show the signs of new life, with its “sticky buds” that will grow into huge broad leaves, making a comforting green canopy. And in the autumn, its broad leaves are the first to turn yellow as it releases hundreds of conkers which delight passing children. The cyclical nature of this tree gives me a solid and reassuring feeling as the years roll by in all their busyness, with children growing up and the changes that life brings me. In a chaotic world with



- **Interns and Placements**

Over the last 6 months we have hosted a number of internships and placements from the University of Liverpool. As part of the Art Bytes partnership, we hosted a Research and Admin intern, Mia for 6 weeks, and three Schools interns, Freya, Poppy and Lauren for 6 weeks.

We are also working with a number of MA students; Shelby who helped Hazel with social media, Mani who is looking at how we can better use our AR and Virtual Gallery tools for Art Bytes and Jelena, who did some fantastic research on the expansion of Art Bytes. Keep your eyes open for Jelena this summer as she will also be volunteering for Liverpool Art Fair!



- **Studio Update**

Our Lord Street artists' studios, right in the heart of Liverpool city centre, in Lord Street remain full, with a large waiting list.

Our Royal Liver Building studios also remain full.

We are still looking for a third studio site and members will be the first to know if we are able to secure this!

- **Artists' Social**

On 22nd January, we held our bi-annual dot-art Member Artists Social event, at Rudys on Castle Street. Over 30 artists attended, with members also bringing along potential new artists who would like to find out more about working with us, and feedback was excellent. We will continue to hold these events every 6 months, alternating with Artists' Forums; the next one will be in the summer.



- dot-art's 20th Birthday!



20 YEARS OF ART FOR EVERYONE

As well as our two successful exhibition, we have also had a short film made to mark our 20th birthday, which can be seen on our YouTube channel here:

<https://youtu.be/Xq6jYuE0KhA?si=o1VVJFoMN7Zhmniu>



It was produced by the wonderful James Murphy of Event Horizon, who was the first ever winner of our dot-art Schools programme, back in 2013! (You can see the film he made about his experience here:

https://youtu.be/LMnCeOxqK_w?si=rrwiYGgVsPM5TsFV



dot-art.com



info@dot-art.com



0345 0176660



dot-art

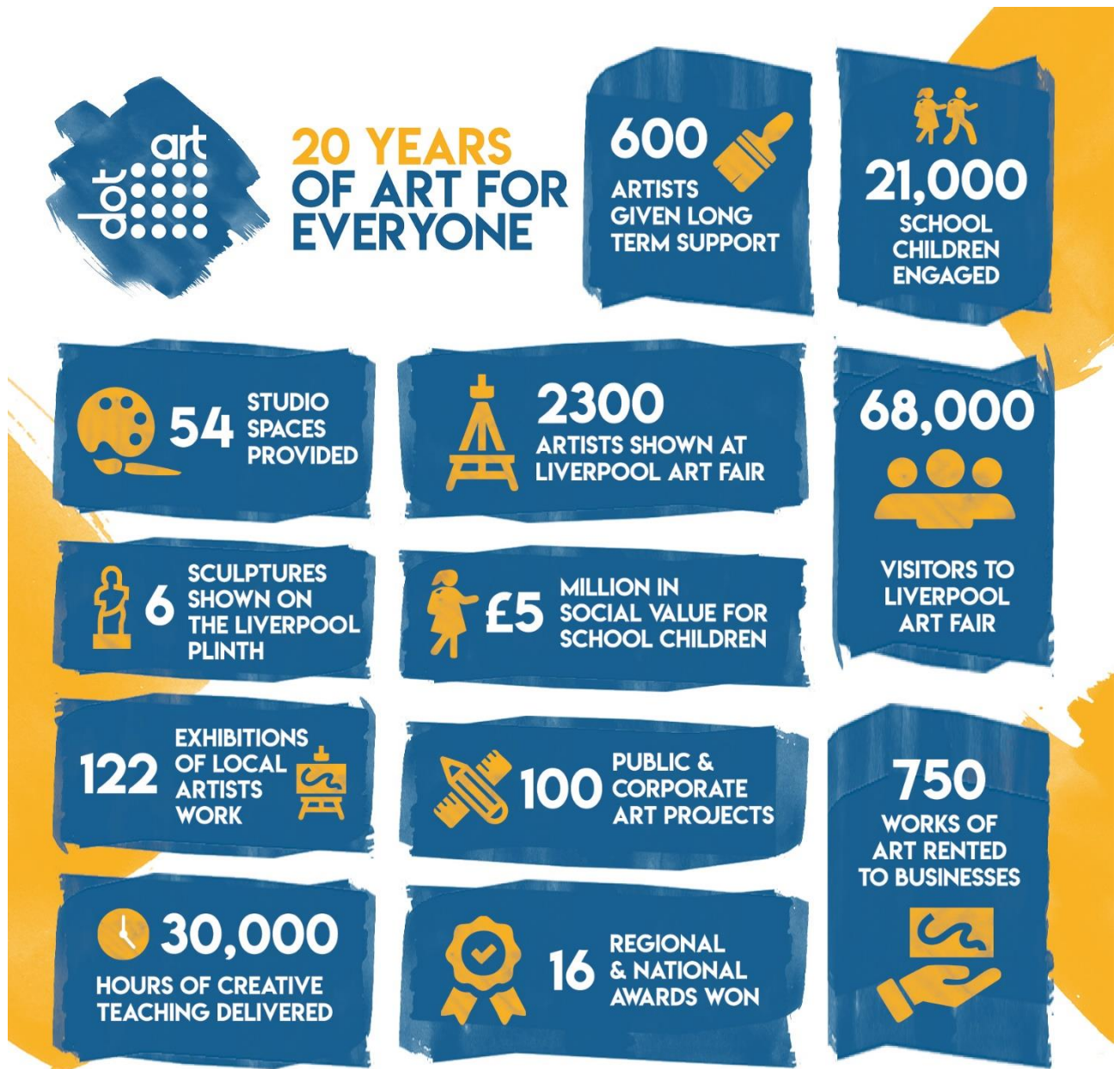


@dotartliverpool



dot-art

We've also had an infographic produced, showing just some of the facts and figures about the last 20 years:



Please feel free to share these!

- **Other News from the past 6 months:**

- Madeleine Pires has been commissioned to create a second mural for Onward Homes.
- Olga Snell, Eve Baker and Madeleine Pires have been commissioned to deliver Easter Bonnet workshops in Liverpool ONE.
- Brigitte Watkinson worked with a local school to produce an 8 panel artwork for a new café bar at Aintree Racecourse.
- Brigitte Watkinson was also commissioned to do live drawings of outfits at Ladies Day during the Grand National Festival at Aintree Racecourse.
- Olga Snell was commissioned to deliver a decoupage workshop for a corporate client.
- Emma Sullivan delivered a workshop in a local primary school.



For more information please see: dot-art.com, email info@dot-art.com or call 0345 0176660

You can also follow us on [Instagram](#) and [Facebook](#) or sign up to our [Mailing List](#).

dot-art Gallery,
14 Queen Avenue,
Castle Street,
Liverpool,
L2 4TX.



dot-art.com



info@dot-art.com



0345 0176660



[dot-art](#)



[@dotartliverpool](#)



[dot-art](#)