

dot-art Studio / Workspace Available

PRICES REDUCED FOR 2017!

We are delighted to announce that we have a number of very **affordable, flexible** studios / work-spaces available in Crosby, just outside Liverpool City Centre.

The studios are open to both **member and non-member artists of dot-art**, with members benefiting from a discounted rate. The space is open plan, has windows letting in natural light along two full walls, is fully heated and can be **accessed 24 hours a day** (7am-7pm Monday-Friday staffed, out of hours on request). Sizes are flexible, and contracts will be on a month-by-month basis.

Please find below a plan of the space. It is a large open plan room on the fourth floor of Burlington House, Crosby Road, with windows along two walls letting in **natural light**. There is a separate kitchen within the suite, which also benefits from **central heating**. It is secure, staffed and 24 hour access is available by key card (at additional cost). There is also **free parking** in the on-site car park and the building is just 100 yards from Waterloo Railway Station with many buses stopping directly outside the building.

All arrangements will be on a **monthly basis**, with either party able to cancel at any point (We have use of the space for 12 months, but can be given 3 weeks notice to vacate.)

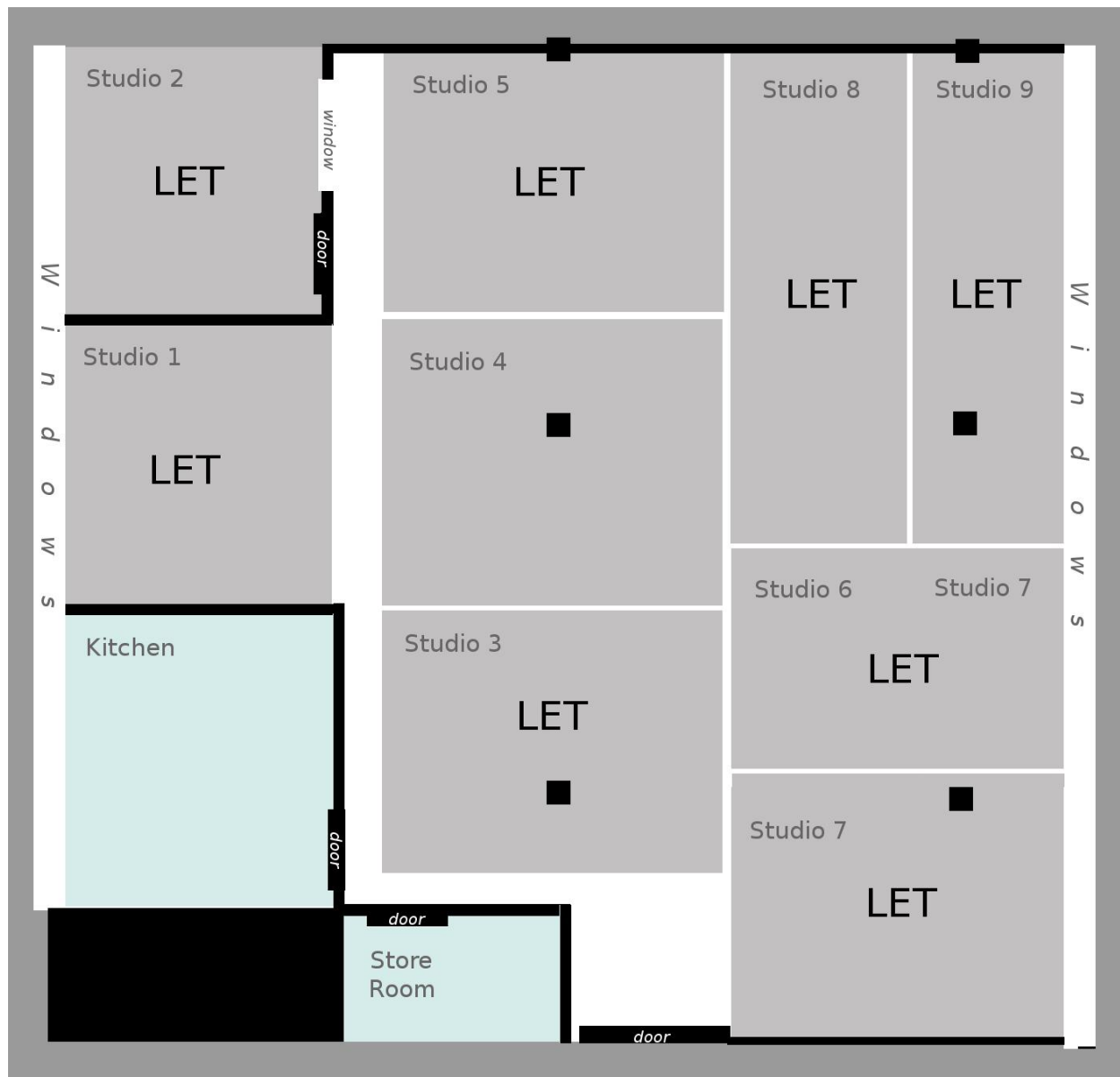
As you will see, we have split the space into nine sections of between 12 and 15 square metres), however should you wish a different size space, this can also be arranged. Each space is currently empty, for you to bring in whatever furniture / boards / easels / equipment you may need.

Artists will need to arrange their own insurance as dot-art will take no responsibility for damage or loss sustained on the premises. Full terms and conditions are available to view on enquiry.

We are able to offer these spaces at subsidised rates (see below) which will be payable in advance.

Please contact Lucy or Jess on 0345 017 6660 / services@dot-art.com to arrange a viewing at your convenience.





Monthly Rental Prices:

Studio 1 (semi self-contained): £90+VAT (£108) non-member / £80+VAT (£96) member
 Studio 2 (self-contained room): £120+VAT (£144) non-member / £110+VAT (£132) member
 Studios 3-9 (open plan): £65+VAT (£78) non-member / £55+VAT (£65) member

Approximate sizes:

Studio 1: 4 x 3.6 metres (14.1sqm) / 13.1 x 11.8 feet (155 sqft)
 Studio 2: 3.6 x 3.4 metres (12.25sqm) / 11.8 x 11.2 feet (132 sqft)
 Studio 3: 4.4 x 3 metres (13.2sqm) / 14.4 x 9.8 feet (141 sqft)
 Studio 4 - 7: 4.4 x 3.4 metres (15sqm) / 14.4 x 11.2 feet (161 sqft)
 Studios 8 + 9: 6.25 x 2.4 metres (15sqm) / 20.5 x 7.9 feet (162 sqft)

